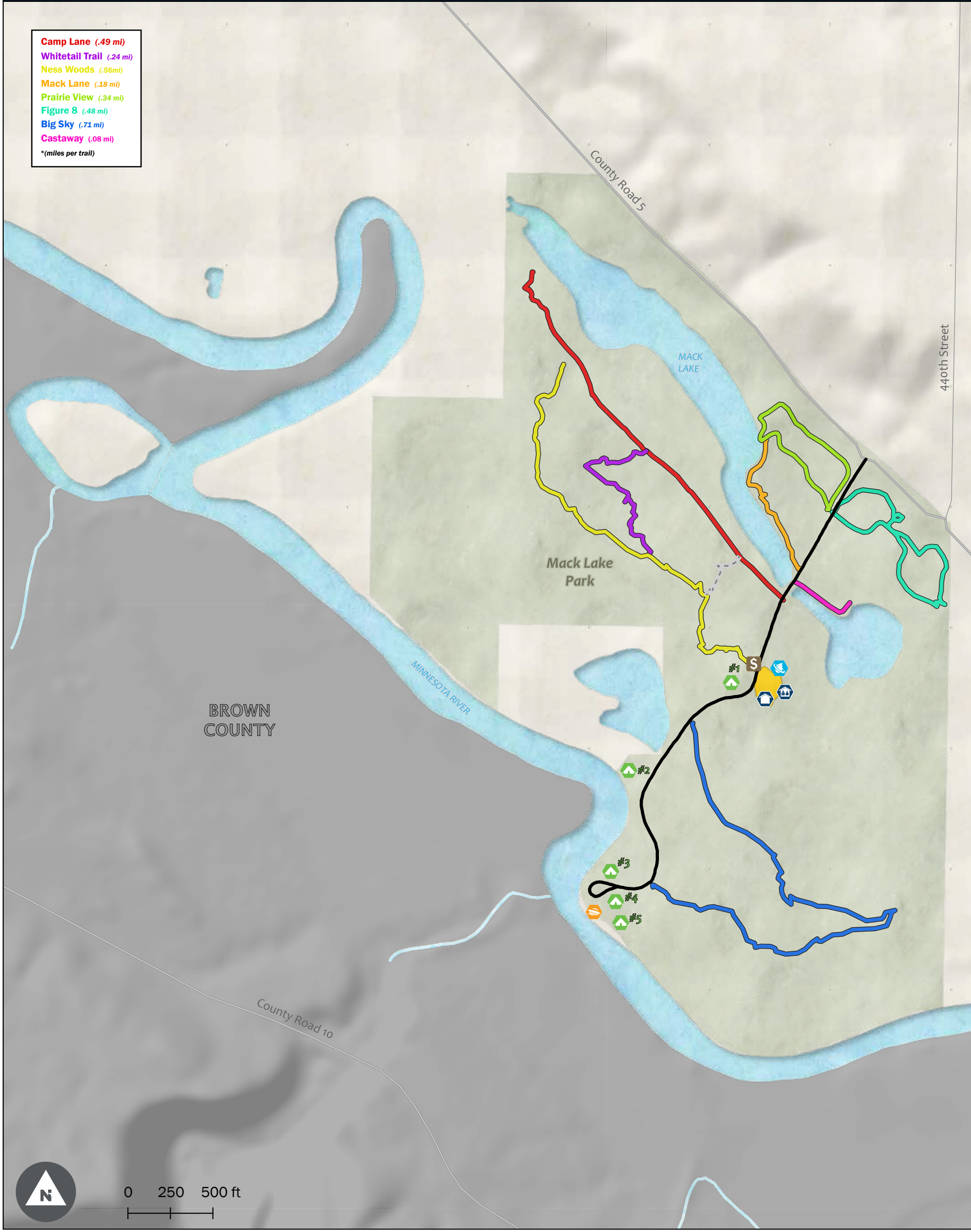


Mack Lake County Park - Feature

- Camp Lane (.49 mi)**
 - Whitetail Trail (.24 mi)**
 - Ness Woods (.56mi)**
 - Mack Lane (.18 mi)**
 - Prairie View (.34 mi)**
 - Figure 8 (.48 mi)**
 - Big Sky (.71 mi)**
 - Castaway (.08 mi)**
- *(miles per trail)



- Boundaries**
- Camp Slot
 - Common Area
 - Park
 - State Park
 - Water
- 9 unique trails shown with distinct colors**

- Amenities**
- Boat Landing
 - Fishing Pier
 - Horse Camp
 - Regular Campsite
 - Restroom
 - Shelter
 - Water Fixtures

- Points of Interest**
- Bridge
 - Canoe Access
 - Dump Station
 - Electricity Hook-Up
 - Gate
 - Handicapped Parking
 - Historic Site
 - Horse Tie
 - Information Kiosk
 - Manure Bunker

- Natural Features
- Parking
- Paybox
- Playground
- Severe Weather Siren
- Storage Shed
- Trail Marker
- Trailer Areas
- Water Crossing

